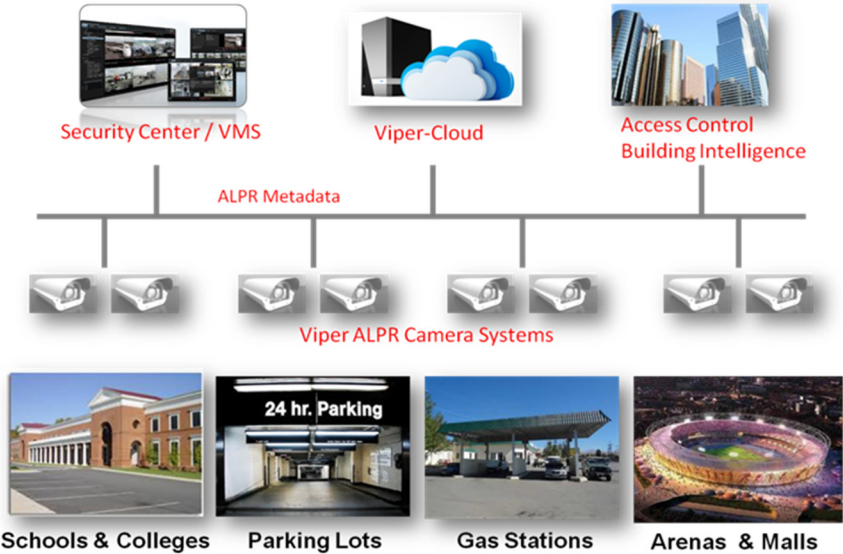


Key Features

- Hosted and secured ALPR data collection and reporting services
- Direct connectivity with unlimited Viper ALPR 'All-in-one' Camera Systems
- Web-based intuitive GUI accessible from any web browser
- Fully-Featured Site Management
- Full and partial license plate, and geo-zone queries
- Centralized Hot-Lists and Hot-Plates Management
- Advanced Location and Mapping Services
- Real-time Target Alert Service of filtered alert notifications for 'In-Network' PC clients



Product Overview

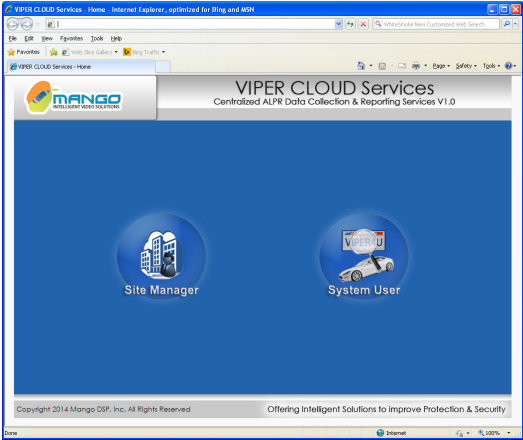
The **VIPER CLOUD Services** provide web-based management of Viper ALPR Camera Systems, Site managers and System users, Hot-Lists, Full and partial license plate search, Alert notifications and reports via email, as well as centralized repository, accessible only to authorized users via any web browser.

The **VIPER CLOUD Services** operate over internet, LAN or WAN networks, and support direct connections with Viper ALPR Camera Systems.

Product Advantages & Benefits

"All In One centralized dashboard for plate management"

- Secured Hosted Service - Eliminate investment in hardware and maintenance fees
- Scalable solution allowing unlimited direct connections with Viper 'All-in-One' Camera Systems, and unlimited Site & System Users management
- Advanced features set, such as: Dashboard stats, Hot-List management, Comprehensive filters and reporting, and Real-time alert notifications
- Optional data sharing between sites and external databases

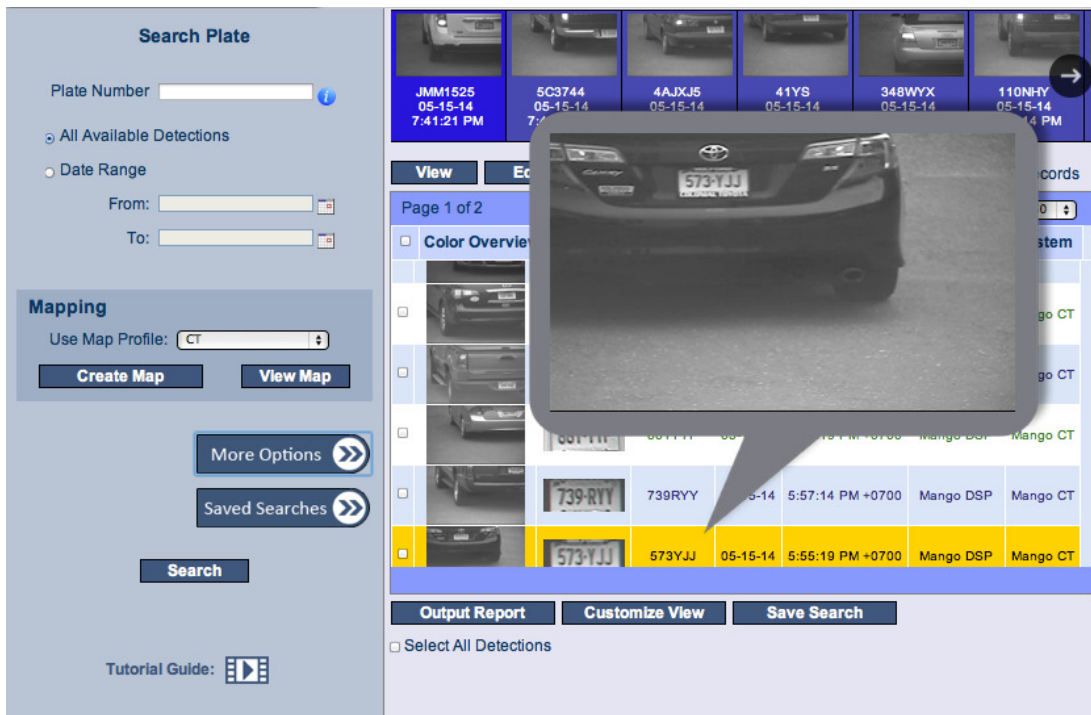


OFFERING INTELLIGENT SOLUTIONS TO IMPROVE PROTECTION & SECURITY

Feature Set

Admin	Site Management	Users Management	Data Operations	Hot-List Management	License Plate Query	Special Processes	Mapping Tools
Dashboard	Site Manager Profile	System User Profile	Alerts Management	Hot-List Upload	Quick Search	Auditing	Visit Location
User Roles	Manager Accounts	Site Manager Contact List	Target Alert Service	Hot-List Templates	Geo-zone Search	Data Sharing	Mapping Alert Service
	Supported Systems		Filters Management	Adding Hot-Plate	Advanced Search		Density Map
	Software Updates		Alert Types	Search Records	Reports Generation		
				Hot-List Reports			

License Plate Query



The screenshot displays the 'Search Plate' interface. On the left, there are search filters including 'Plate Number', 'All Available Detections', and 'Date Range'. Below these are 'Mapping' options like 'Use Map Profile' and 'Create Map'. A 'Search' button is at the bottom left. The main area shows a grid of search results with columns for license plate, date, and time. A large image of a car with license plate 573-YJJ is overlaid on the results. At the bottom, there are buttons for 'Output Report', 'Customize View', and 'Save Search'.